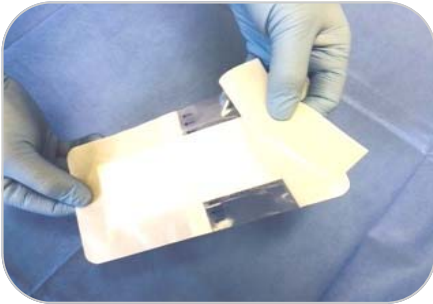
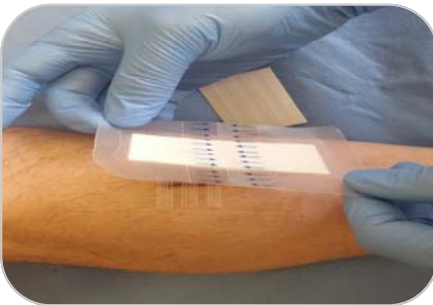




Assess the wound size, measuring the wound if necessary.



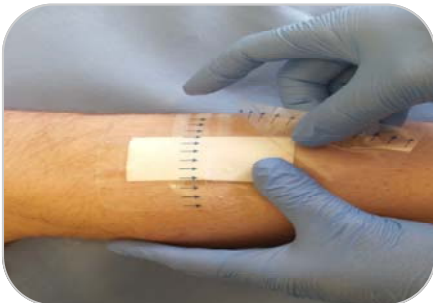
Remove the white dressing backing paper to expose the absorbent pad and adhesive border.



Ensure the dressing is placed centrally over the wound bed. Where there is exudate, place the pad slightly offset to the wound to allow for the exudate to run away.



Apply the dressing, gently press down the adhesive border to the skin. Remove the release film as indicated by the blue arrows (on the back of the dressing).



Remove the release film as indicated by the blue arrows (on the back of the dressing).



Smooth the dressing from the centre, towards the edges, using gentle pressure to enhance adhesion.